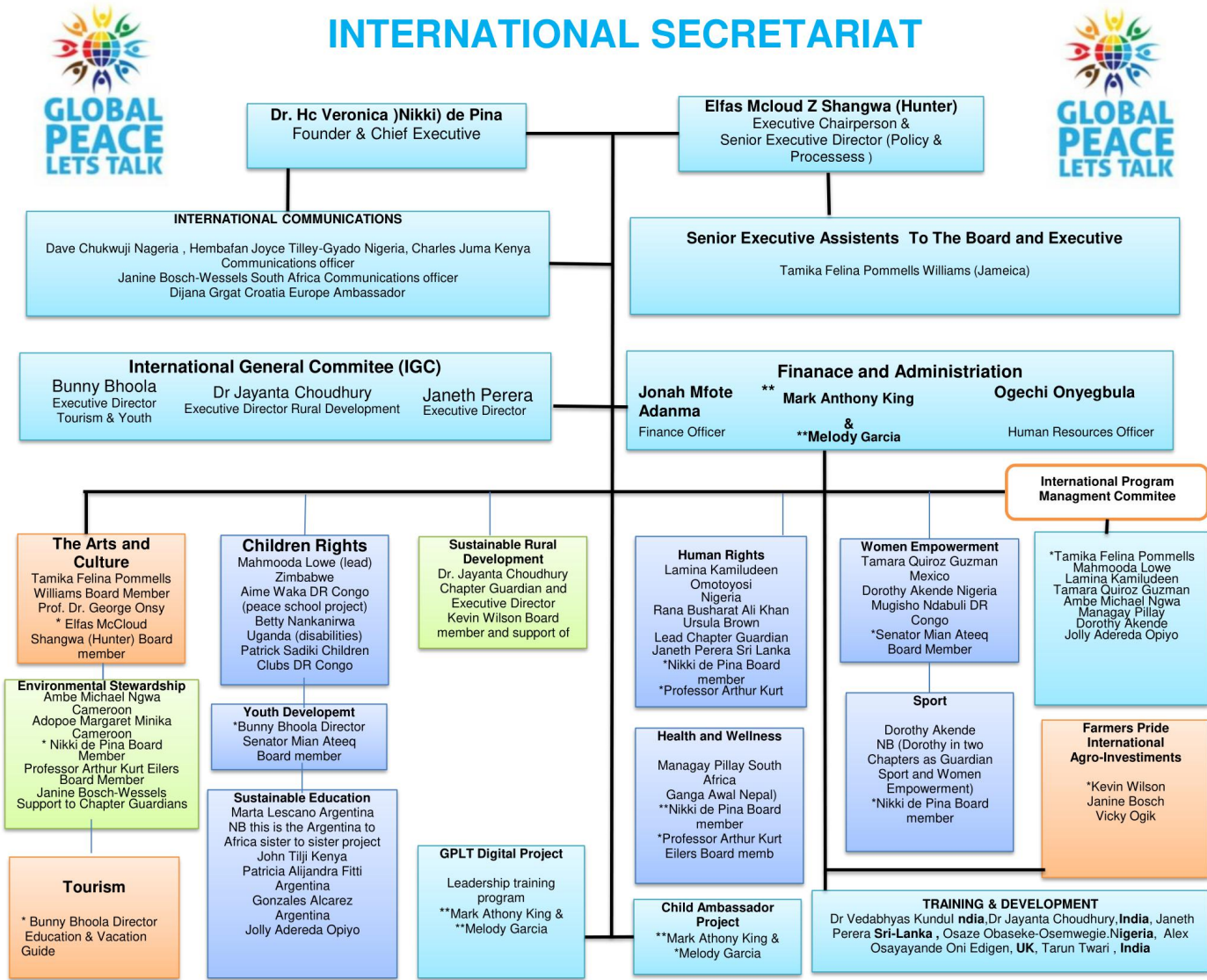


THE INTERNATIONAL SECRETARIAT

The GPLT International Secretariat is led by the Founder and Chief Executive Dr Veronica Nikki de Pina who is based in the UK who is the most senior Executive of the movement. She is followed in line by Elfas Mcloud Z. Shangwa the Senior Executive Director and current Executive Chairperson of the Movement. The two coordinate the structures below working with the International Executive Council and the board.

INTERNATIONAL SECRETARIAT



Legend: ** International Executive Council
* Board members

The organiogram has been made using coloful boxes, light blue colours represents executive members the Bord, the IEC and managment committees the dark blue are departments carrying out humanitarian activities, the Orange boxes are for departments that have activities that are used as income generation projects, the green n/ yellowish boxes represent projects that covers the Agriculture value chain and the environment stewardship.

As a strategic internal reporting structure for GPLT Secretariate, our programes are intelinked to each other and this is shown by colors of each box, all boxes with same colors represent linked programs, the light blue represents the international General Assembly deligation who meet once after every 3rd year on a GPLT elective General assemlly where board members stand for re-election or are handing over duties to newly elected board members, during the same period the GPLT strategy will be reviewed together with other GPLT statutes, these tea ms will also adopt the 3 year activities for GPLT that would have been brought on the table by the International program management committee working with the International General Committee.

At this meeting the IEC will sit as the election presiding body of the GPLT, they will also be approving what the General assembly would have adopted, during the same time different committees will be eestablished to over see and monitor GPLT international projects